

GREAT CENTRAL RAILWAY
6 W.C. BOGIE PASSENGER ENGINES NO'S 1095 - 1104
 MAKERS PROGRESSIVE NO 4S16 - 4S25

MAKERS' ORDER NO 9458

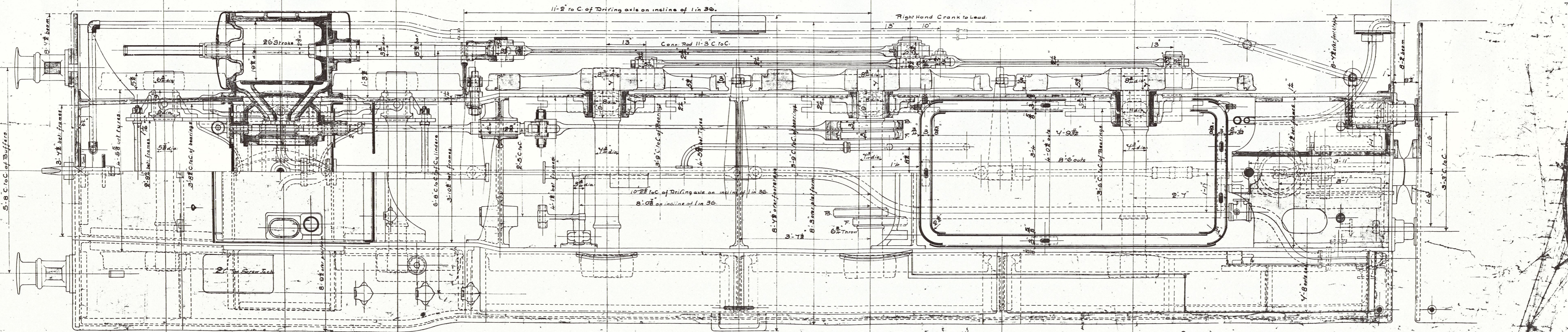
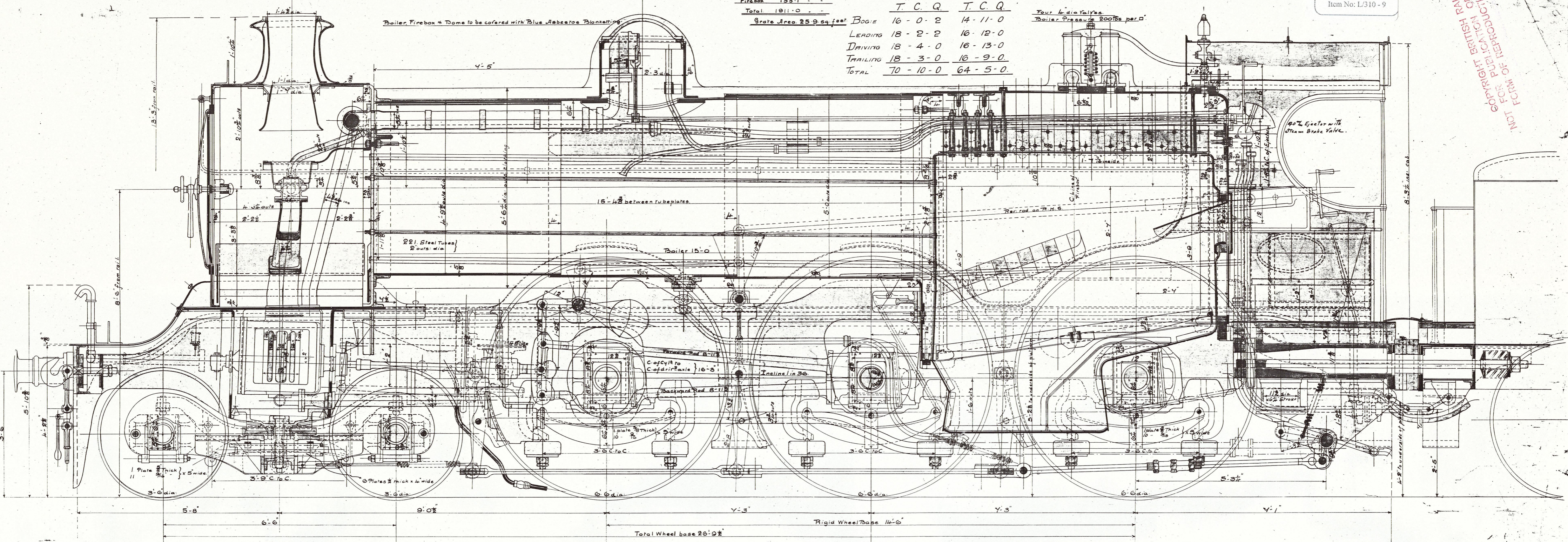
Property of the Great Central Railway Society Archive
 Item No: L310-9

Heating Surface:
 Tubes 1774.9 sq feet
 Firebox 133.1
 Total 1911.0

WEIGHT OF ENGINE ON RAILS

	In Working Order	EMPTY
	T. C. Q.	T. C. Q.
BOGIE	16-0-2	14-11-0
LEADING	18-2-2	16-12-0
DRIVING	18-4-0	16-13-0
TRAILING	18-3-0	16-9-0
TOTAL	70-10-0	64-5-0

Four 4-dia Valves
 Boiler Pressure 200lbs per sq



Valve Motion

	Forward	Backward
Throw of Eccentrics	6 1/2"	6 1/2"
Angle	100°	100°
Clearance at top of Link	1/16"	1/16"
Bottom of Link	1/16"	1/16"
Lap of Valve	3/16"	3/16"
Lap of Valve	3/16"	3/16"
Forward gear	1/16"	1/16"
Backward gear	1/16"	1/16"

Copy to 1/200

NOT FOR REPRODUCTION WITHOUT PERMISSION OF THE GREAT CENTRAL RAILWAY SOCIETY

124/2